

Data File Used in this Analysis:

---

```
# Math 3070 - 1      Bar Soap Data      July 26. 2010
#
# The following weights (in ounces) of bars of soap are given in Navidi,
# Statistics for Engineers and Scientists, 2nd. ed., McGraw Hill 2008
#
Weights
11.6
12.6
12.7
12.8
13.1
13.3
13.6
13.7
13.8
14.1
14.3
14.3
14.6
14.8
15.1
15.2
15.6
15.6
15.7
15.8
15.8
15.9
15.9
16.1
16.2
16.2
16.3
16.4
16.5
16.5
16.5
16.6
17.0
17.1
17.3
17.3
17.4
17.4
17.4
17.4
17.6
17.7
```

18.1  
18.3  
18.3  
18.3  
18.5  
18.5  
18.8  
19.2  
20.3

---

**R Session:**

---

R version 2.10.1 (2009-12-14)  
Copyright (C) 2009 The R Foundation for Statistical Computing  
ISBN 3-900051-07-0

R is free software and comes with ABSOLUTELY NO WARRANTY.  
You are welcome to redistribute it under certain conditions.  
Type 'license()' or 'licence()' for distribution details.

Natural language support but running in an English locale  
R is a collaborative project with many contributors.

Type 'contributors()' for more information and  
'citation()' on how to cite R or R packages in publications.  
Type 'demo()' for some demos, 'help()' for on-line help, or  
'help.start()' for an HTML browser interface to help.

Type 'q()' to quit R.

[R.app GUI 1.31 (5538) powerpc-apple-darwin8.11.1]  
[Workspace restored from /Users/andrejstreibergs/.RData]

```
> # Read the data file, indicating that the first entry is the variable name  
> x <- read.table("M3073BarSoapData.txt",header=TRUE)
```

```
> # make the variables available to R  
> attach(x)
```

```
> # List the variable "Weights". It is a numeric vector.
```

```
> Weights
```

```
[1] 11.6 12.6 12.7 12.8 13.1 13.3 13.6 13.7 13.8 14.1 14.3 14.3 14.6 14.8  
[15] 15.1 15.2 15.6 15.6 15.7 15.8 15.8 15.9 15.9 16.1 16.2 16.2 16.3 16.4  
[29] 16.5 16.5 16.5 16.6 17.0 17.1 17.3 17.3 17.4 17.4 17.4 17.6 17.7 18.1  
[43] 18.3 18.3 18.3 18.5 18.5 18.8 19.2 20.3
```

```
> # Make the histogram using the instruction "hist"
```

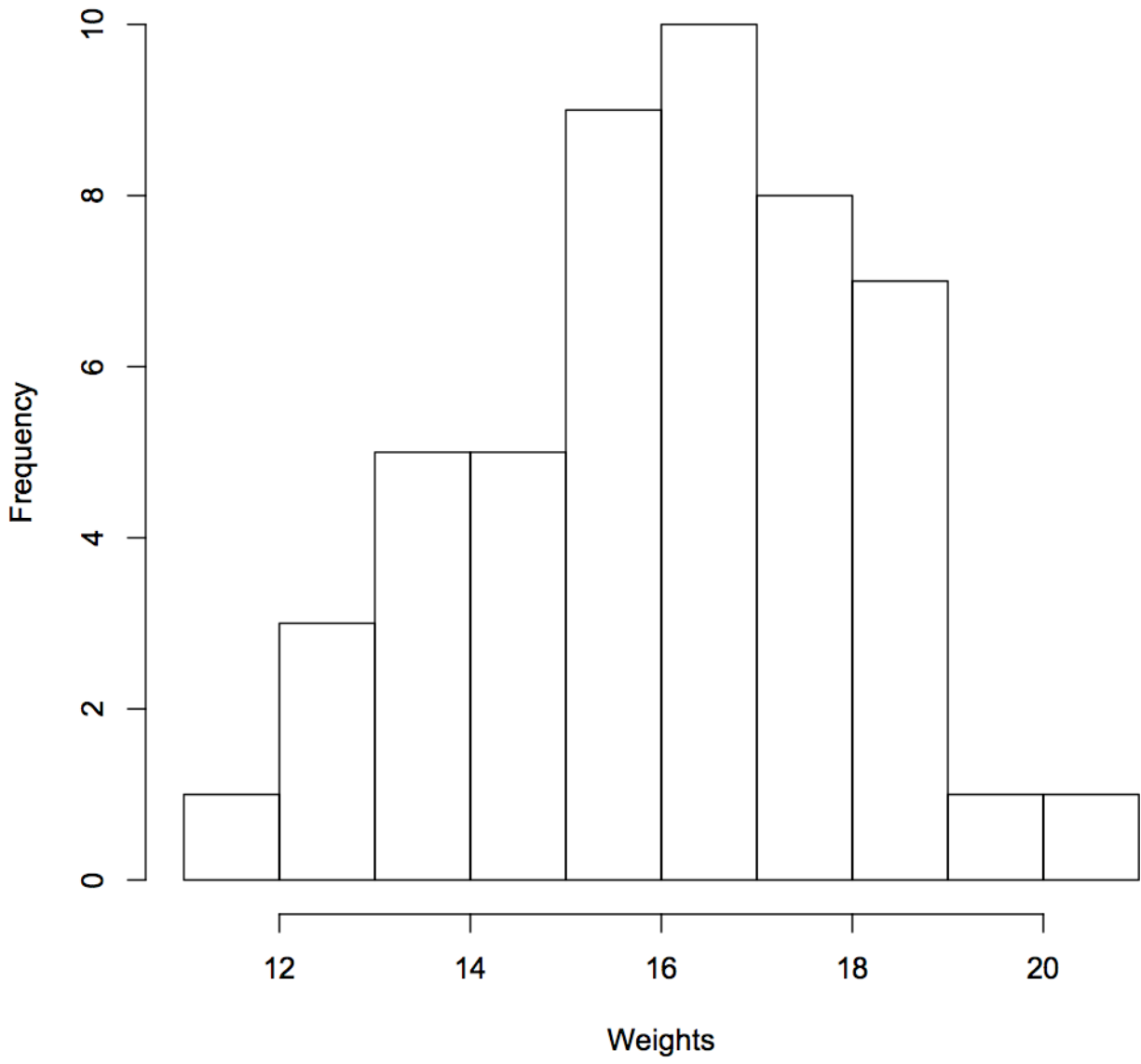
```
> hist(Weights)
```

```
> # You can add bells and whistles.
```

```
> hist(Weights,col="lightgreen",border="blue",label=TRUE)
```

```
>
```

# Histogram of Weights



# Histogram of Weights

